

Metadata Mapping

iView MediaPro / Expression Media to Adobe Bridge & Photoshop CS3

By David Hanks • dh@davidhanks.com
November 2007 (updated June 2008)

The chart below lists each field in the iView Media Pro *Info Panel* and which *File Info* field(s) they map to in Adobe Bridge & Photoshop CS3.

Settings

Bridge CS3 > Preferences > Metadata > File Properties (checked) / IPTC Core (checked)
iView MediaPro > Preferences > General > Field Names > Adobe Photoshop CS

Instructions

1. Enter all metadata into iView MediaPro
2. iView MediaPro > Action > Sync Annotations > Export Annotations to Original Files
3. Open Bridge and/or Photoshop CS3
4. Examine File Info
[detailed sync instructions are on page 58-59 of the iView MediaPro user manual, and on pages 47-48 of the Expression Media user manual]
[Sync Annotations can only be performed with these filetypes: JPG, TIF, PSD, NEF, CR2, DCS, DNG]

Creating Adobe custom *File Info* panels

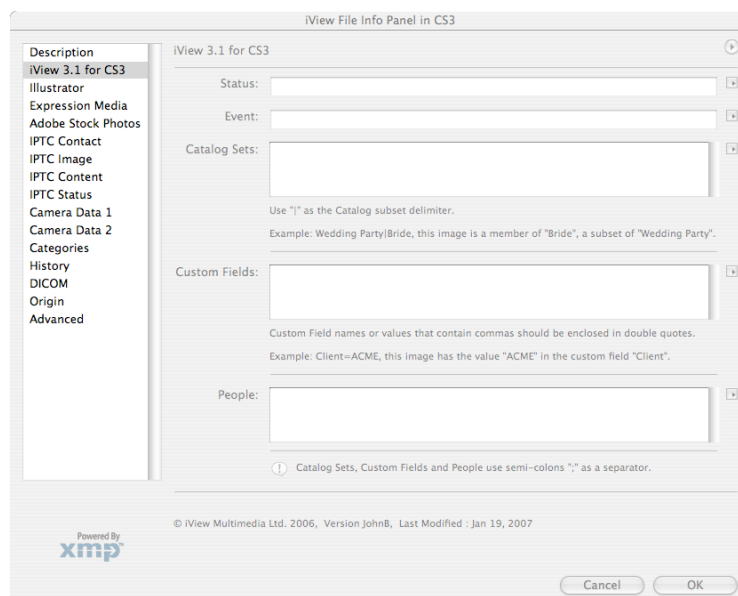
Some fields are not mapped between software (such as geotagging). Adobe "allows you to define, create, and manage custom metadata properties" by creating your own panels for File Info by downloading a small ZIP file from the Adobe website:

http://partners.adobe.com/public/developer/xmp/sdk/topic_cust_file_info_panels.html

iView *File Info* panel for Adobe CS3

John Beardsworth has created a script so that the iView *File Info* panel (which shipped with CS and CS2) is functional in CS3. Instructions:

1. Download his script here: http://www.beardsworth.co.uk/iview_scripts.php?group=bridge
2. Save it as "iViewPanel_for_CS3_by_John.txt"
3. Place it here: (Mac) /Library/Application Support/Adobe/XMP/Custom File Info Panels
(PC) /Program Files/Application Support/Adobe/XMP/Custom File Info Panels



Important note for Microsoft Windows users

In Windows XP or Vista, "do not use the Photo Acquisition Wizard to download the photos to the hard disk. Also, do not use Windows Photo Gallery, Windows Live Photo Gallery or Windows Explorer to edit the properties of the image". - ever. Use of any of these programs in XP or Vista can erase metadata. (<http://support.microsoft.com/kb/927527/en-us>)

iVMP : Info Panel

Label/Urgency

[note: color labels do not map - iVMP uses 10 colors and Adobe uses 6 colors]

1 red

2 yellow

3 green

4 blue

5 purple

6 orange

7 cyan

8 magenta

9 gray

0 none

Rating

0 stars

1 star

2 stars

3 stars

4 stars

5 stars

Product/Headline

Genre/Document Title

Category

Intellectual Genre

Event

Event Date/Date Created

Author

Creator

Creator's Job Title

Address

City

State/Province

Postal Code

Country

Phone(s)

Email(s)

Websites(s)

Credit

Source

Copyright

Transmission

Rights Usage Terms

URL

Location

City

State

Country

ISO Country Code

Latitude

Longitude

Instructions

Br/Ps CS3 : File Info

Origin > Urgency

Origin > Urgency: 1 High

Origin > Urgency: 2

Origin > Urgency: 3

Origin > Urgency: 4

Origin > Urgency: 5 Normal

Origin > Urgency: 6

Origin > Urgency: 7

Origin > Urgency: 8 Low

Origin > Urgency: 1 High

Origin > Urgency: 0 None

Star Rating

0 stars

1 star

2 stars

3 stars

4 stars

5 stars

IPTC Content > Headline & Origin > Headline

Description > Document Title & IPTC Status > Title

Categories > Category

IPTC Image > Intellectual Genre

Advanced > <http://ns.iview-multimedia.com/mediapro/1.0/> > mediapro:Event

IPTC Image > Date Created & Origin > Date Created

Description > Author & IPTC Contact > Creator

Description > Author & IPTC Contact > Creator

Description > Author Title & IPTC Contact > Creator's Job Title

IPTC Contact > Address

IPTC Contact > City

IPTC Contact > State/Province

IPTC Contact > Postal Code

IPTC Contact > Country

IPTC Contact > Phone(s)

IPTC Contact > Email(s)

IPTC Contact > Websites(s)

IPTC Status > Provider & Origin > Credit

IPTC Status > Source & Origin > Source

Description > Copyright Notice & IPTC Status > Copyright Notice

IPTC Status > Job Identifier & Origin > Transmission Reference

IPTC Status > Rights Usage Terms

Description > Copyright Info URL

IPTC Image > Location

IPTC Image > City & Origin > City

IPTC Image > State & Origin > State/Province

IPTC Image > Country & Origin > Country

IPTC Image > ISO Country Code

(no field to map to)

(no field to map to)

IPTC Status > Instructions & Origin > Instructions

Status	Advanced > http://ns.iView-multimedia.com/mediapro/1.0/ > mediapro:Status
Writer	Description > Description Writer & IPTC Content > Description Writer
People	Advanced > http://ns.iView-multimedia.com/mediapro/1.0/ > mediapro:People
Keywords	Description > Keywords & IPTC Content > Keywords
Categories	Categories > Supplemental Categories
Scenes	IPTC Image > Scene
Subject Codes	IPTC Content > IPTC Subject Code
Description	Description > Description & IPTC Content > Description
Catalog Sets	Advanced > http://ns.iView-multimedia.com/mediapro/1.0/ > mediapro:CatalogSets
Place Finder	
Country	IPTC Image > Country & Origin > Country
State	IPTC Image > State & Origin > State/Province
City	IPTC Image > City & Origin > City
Location	IPTC Image > Location
Custom Field(s) 1-16	Advanced > http://ns.iView-multimedia.com/mediapro/1.0/ > mediapro:UserFields
(no field to map from)	Description > Copyright Status
(no field to map from)	DICOM > (all fields)

Information compiled by David Hanks. David Hanks is a photographer and assistant (digital tech) with a thorough knowledge of photographic software including: Adobe Bridge + Camera Raw + Lightroom + Photoshop / Apple Aperture / DxO Optics Pro / MicroSoft Expression Media / iView MediaPro / Phase One Capture One Pro ... and more. He lives in Oakland, California.

All content (except where noted) is ©2008 David Hanks. It may be used freely for educational purposes provided this notice is included and content is not altered. This article is available in PDF at www.davidhanks.com > digital asset management

Also by David Hanks:

*All About Metadata: An Introduction for Digital Photographers
iView MediaPro or Expression Media?: A Thorough Comparison
available at: <http://www.davidhanks.com/dam.html>*